

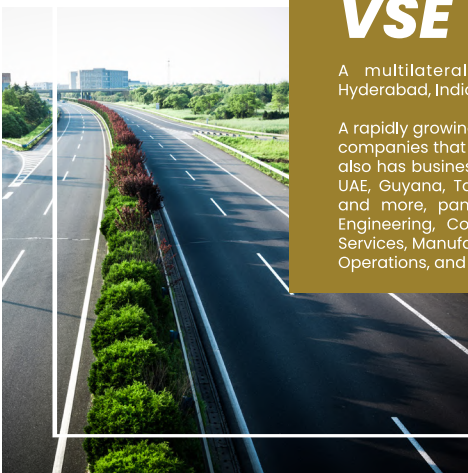
*Vishwa Samudra Engineering*



**VISHWA  
SAMUDRA**  
CHALLENGE IT. CHANGE IT.



**Vishwa Samudra Engineering  
is the flagship company of the  
Vishwa Samudra Group**



## **VSE**

A multilateral business conglomerate headquartered in Hyderabad, India.

A rapidly growing group with a strong presence in India, with over 15 companies that started its roots at the Krishnapatnam Port in India, also has business interests in various countries like Singapore, USA, UAE, Guyana, Tanzania, Saudi Arabia, Maldives, France, Germany, and more, panning across various verticals - Infrastructure & Engineering, Construction, Logistics, Shipping Services, Maritime Services, Manufacturing, Commodity Trading, Security Services, Port Operations, and Real Estate.



## ***SUSTAINABILITY IN EVERY STEP***

Balance is the essence of creation. It is the equilibrium of natural and man-made resources that contribute to the foundation and sustainability of our society. With growing concerns over climate change and the finite nature of resources, this balance is being threatened leaving a big question mark on the future of the planet. Dense forests and centuries-old mountains have paved way to rising edifices and thriving cities, making our environment vulnerable to various threats.

At Vishwa Samudra Engineering, we operate with a primary goal to reduce the impact of construction on the environment. We follow an innovative approach in selecting and integrating processes and materials to create long-term and large-scale infrastructure projects whilst conserving the environment.

Responsible engineering, as we call it, is what defines our approach to construction, while retaining the basic principles of 'balance' in everything we do. A philosophy that has powered our progress as a reliable and forward-thinking infrastructure company with a strong execution track-record.

# ENGINEERING WITH RESPONSIBILITY

## Vision

To be India's leading infrastructure creator, to catch up with the West, pushing the boundaries of innovation and pursuing opportunities to build a sustainable future for everyone.



## Mission

- By combining ecology, economics, and social responsibility
- By promoting and developing innovative building technologies and class-leading expertise
- By enabling superior and timely engineering solutions that yield long-term benefits to stakeholders
- By providing a people-centric environment conducive for professional and personal growth, and optimize their skills to achieve enhanced performance
- By supporting communities and enabling economic growth



## REIMAGINING A NEW ECO-CONSTRUCTION PROTOCOL

The sheer scale and pace of environmental destruction due to infrastructural necessities of the changing world is alarming. The global urbanization boom is devouring colossal amounts of stone and sand - the key ingredients in concrete and asphalt. With the steady disappearance of mountains, forests, and rivers to fulfill the demand, the stability of nature is at stake and we are on the brink of a huge global crisis. We, at Vishwa Samudra, are committed to reversing the damage.



# 5 GUIDING PRINCIPLES



# “BALANCING EXPERIENCE & EXCELLENCE”

## C Sasidhar

*Chairman, Vishwa Samudra Group of Companies*



The dynamic and driving force behind Vishwa Samudra's ascending trajectory, his illustrious journey started from turning around an IT company into a highly successful venture, followed by making an entry into Infrastructure of Seaports and the Marine industry. A modern entrepreneur, he commanded the fastest project execution of the Krishnapatnam Port in a record time of 18 months! His innovative approach to adopting new technologies and methods increased the speed of work by 3 times, including the construction of 3 berths. It also included the construction of over 500 houses for the fishermen, as a CSR initiative.

His diverse experience and sharp business acumen also strengthened the Trading division with the creation of a spectacular Container Terminal, with state-of-the-art machines and operations. Despite the extreme challenges in marketing and sales for Containers, the terminal ensured a consistent growth of over 55% YoY, starting with 5-digit TEUs to an astounding 500,000 TEUs in FY 18-19, over 5 years.

A Civil Engineer who went on to finish a Management Course at the University of Bath - UK, he is defined by a flair for creative excellence complemented by his result-oriented management skills.

In his Chief role as the Chairman of the Vishwa Samudra Group, he oversees the strategy and planning of 4 Maritime-based companies and the Infrastructure Company - Vishwa Samudra Engineering, which has set a benchmark in the construction industry. This rapidly growing company, with high commitment to the environment, has completed some of India's best constructions. Differentiating itself with a unique green technology in Soil Stabilization called StabilRoad, they have reduced the cost, time and saved natural resources drastically on every project! The company is doing projects in States like Andhra Pradesh, Bihar, Uttar Pradesh, Kerala, Telangana, Punjab, Jammu & Kashmir, Manipur, and others, across verticals of Roads, Airports, Building, Ropeways, Seaports, Marine Structures, Irrigation and Civil Structures.

He envisages the Vishwa Samudra Group as an enterprise known for innovation and sustainability contributing to India's success story.

# **“ENGINEERING THE FUTURE”**

## **Dr. Anil Yendluri**

*Managing Director, Vishwa Samudra Eng. Pvt. Ltd.*



An IPS officer for 20 years and a recipient of the coveted President's Police Medal Former Director & CEO of Krishnapatnam Port - making it one of the world's finest ports, in terms of infrastructure, operations, and customer service.

A visionary leader who made significant contribution since the inception of the port, achieved a remarkable milestone of being inducted into the LIMCA Book of Records in 2013 and 2017.

His extensive experience as Kerala's Inspector General of Police, and strong academic qualifications - Master's Degree in Science, followed by an MBA and a Law Degree, apart from his excellent knowledge in Management, Social Sciences, Behavioural Sciences, and Psychology, contribute to his aptitude in operating companies and managing organizations efficiently.

He just completed his PHD in the Faculty of Management Studies.

A fitness enthusiast and an avid golfer, he keeps himself fit by playing golf often.

**“STRENGTHENING NATIONS,  
ONE PROJECT AT A TIME”**

## **Shivdutt Das**

*Executive Director – Vishwa Samudra Holdings Pvt. Ltd.*



A management professional with over 23 years of global work experience in strategic finance, international business, manufacturing, risk, structured finance and projects. He has worked in key roles for reputed multinational organizations like United Spirits, ICICI Prudential, Bharti Axa, Tata AIA, Reliance Nippon and Ajeenkya D Y Patil Healthcare with exposures to India and International markets.

With academic qualifications in Economics from Utkal University, Odisha, Management in Financial Services from Harvard Business School, Boston, USA and Post-graduation Diploma in Human Resources from National Institute of Human Resources, his inclination to academia and research is still a high point.

As the Executive Director Shivdutt is responsible for Group Finance, Treasury, information Technology, Human Resources, Marketing, Corporate Governance, Legal and Investor Relations.

He also mentors the group level finance function with internal and external stakeholder management. With the Vishwa Samudra Group handling projects valued at over US \$ 2.2 Bn, he is responsible for fund raising for projects in India and overseas.

Shivdutt's strong focus on innovation and implementation has enabled the Vishwa samudra Group to become a major conglomerate in India.



# “EMPOWERING GROWTH, ENABLING PROSPERITY”

## Dr. Barun Pal Chowdhury

*Resident Director & CEO Vishwa Samudra Eng. Pvt. Ltd*



An architect with over 3 decades of experience and an alumni of the prestigious School of Planning and Architecture, New Delhi and the Faculty of Management Studies, Delhi University, his expertise in EPC projects across planning, policy making, financial management, business development, change management, design architecture, project management and construction, internationally and in India, have ensured he has been at the helm of crucial projects across reputed companies over the years like Godrej & Boyce, Shapoorji-Pallonji, Qatari Diar, Ashoka Buildcon to name a few. He has successfully delivered on projects worth over US\$ 5 billion worth of projects and has an expertise in the construction of mega projects such as Convention Centres, Museums, Hotels, Hospitals, Stadia, Large Factories, Statues and so on.

His landmark projects include: Tech Parks and Commercial Buildings across India for TCS, ONGC, Ascendas, K Raheja and in Qatar for the Barwa Group. Hotels across India for Taj Vivanta and the Hiltons across Nigeria and Sierra Leone. Industrial facilities for GE, Bridgestone and Amway. ITPO Convention Center, Mahatma Mandir Museum, Colleges in India, Dubai and Algeria also add a lot of variety to his work. His experience in Hospitality includes a bed count of over 6000 across India, Vietnam, Dubai, Kuwait, Riyadh and Damman. The popular Apollo Hospital in Nasik is also one of his creations. With an inclination towards Residential, he has been instrumental in the construction of all kinds of Housing projects for Tata Housing, RBI, EWS, Sunray Housing, MHADA, Amrapali, to name a few. He has a demonstrated history of working in the civil engineering industry and a strong understanding of various construction technologies. He is the recipient of various awards including the Rashtriya Gaurav Award in 2007 and has several research publications to his credit, the most recent being “Challenges and common mistakes in design and build vertical” published in the Construction Week. Known for his innovative construction technologies, fast-paced delivery of construction and cost-optimization, Mr. Barun Pal Chowdhury aims to take the Design and Build vertical at Vishwa Samudra Engineering to greater heights.

An aerial photograph of a cityscape. In the foreground, there's a multi-lane road with a white arch bridge on the right. A river flows through the middle ground, with a large green park area on its banks. In the background, several high-rise apartment buildings are visible against a hazy sky. A white text box with a dark blue border is centered over the image, containing the main title and a paragraph of text. Below the text box is a dark blue horizontal bar with white text.

## FUELING SUCCESS THROUGH METEORIC GROWTH

VSE's meteoric rise since January 2021 has been marked by innovative projects, unparalleled dedication, and an unwavering commitment to excellence. As we expand our horizons and embrace new challenges, we remain deeply rooted in our core values of quality, sustainability, and integrity. Our remarkable growth is a testament to the trust our clients and partners place in us. As we build the foundations of a brighter future, we have changed the narrative to become one of the fastest growing infrastructure companies in India!

**ORDER BOOK VALUE AS ON MARCH 15, 2024: US\$ 2.3 Bn \ INR 18,192 Cr**

# BUILT ON FINANCIAL FORTITUDE & ENGINEERING BRILLIANCE

Vishwa Samudra Engineering stands as a beacon of strength and reliability when it comes to handling HAM (Hybrid Annuity Model) projects. Our financial strength and robust track record exemplify our ability to seamlessly integrate design, construction, and operation phases, ensuring the timely and cost-effective delivery of projects

**4 HAM PROJECTS WORTH: US\$ 791.75 MN / INR 6295 CR**

*All these HAM Projects are under National Highways Authority of India (NHAI) and National Highways Logistics Management Limited (NHLML), two of India's premier infrastructure creators entrusted with developing, maintaining, and managing National Highways and Multi-modal Logistics like Ropeways, under the Ministry of Road Transport and Highways.*



- 1. Jammu Highway Project
- 2. Kollam Highway Project
- 3. Kannur Highway Project



- 1. Varanasi Urban Ropeway Project

VSE's HAM projects not only meets but often exceeds industry standards. Our unwavering dedication to innovation and the highest ethical standards positions us as a formidable force in the realm of HAM projects, ready to transform visions into tangible, enduring infrastructure assets that benefit the country for generations to come.

## THE NEXT EPISODE: MULAPETA PORT

The Vishwa Samudra Group bagged the project to construct the Mulapeta Port, in Andhra Pradesh – India, as an EPC contract.

*Period of Completion: 30 Months*

*Work Commencement Date: April 18, 2023*

*Contract Value: US\$ 388 Mn (INR 2949.7 Cr)*

*Department: Andhra Pradesh Maritime Board, India*



## HARBOURS OF PROSPERITY

Vishwa Samudra Engineering has been bestowed with the Construction of building Fishing Harbours in Andhra Pradesh, on a lumpsum contract basis.

### **Locations:**

1. Budagatlapalem in Srikakulam District
2. Pudimadaka in Visakhapatnam District
3. Biyyaputippa in West Godavari District
4. Vadarevu in Prakasam District
5. Kothapatnam in Prakasam District

### **Contract Value:**

US\$ 196 Mn (INR 1495.35 Cr)

### **Department:**

Andhra Pradesh Maritime Board, Govt. of Andhra Pradesh

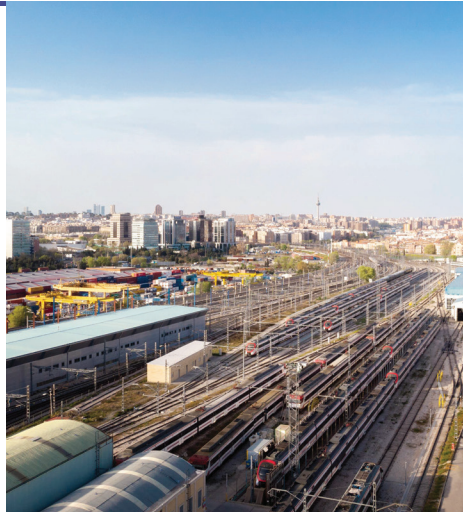
## MUMBAI METRO DEPOT

Vishwa Samudra Engineering in a JV with SEW Infrastructure bagged the Construction of the Metro Line – 4 Mogharpada Depot in the Mumbai Metro Rail Project.

- Depot, Infrastructures operational control centre
- Administrative building, maintenance and workshop buildings
- Architectural finishing works
- Design and build of pre-engineered building structures of car depot and more

**Contract Value:** US\$ 113 Mn (INR 905.77 Cr)

**Department:** MMRDA, Govt. of Maharashtra



## REDEFINING URBAN TRANSPORTATION WITH ROPEWAYS

Vishwa Samudra Engineering has been awarded the Development, Operation and Maintenance of the Ropeway Project from Varanasi Cantonment to Godowlia Chowk, Uttar Pradesh – India, under the HAM Model.

**Length of 3.85 KM;** Passenger capacity per hour per **direction:** 3000

**Contract Value:** US\$ 106 Mn (**INR 807 Cr**)

**Department:** The National Highways Logistics Management Limited (NHLML), Govt. of India

# NEW PROJECTS: IN PHASE 1



S. No.	Description of Work	Project Cost
1.	Construction of 5 Fishing Harbours in Andra Pradesh (Budagatlapalem, Pudimadaka, Biyyaputippa, Vadarevu, Kothapatnam)	US\$ 186.91 Mn INR 1495.35 Cr
2.	Construction of Metro line- 4 Mogharpada Depot, Mumbai Construction of depot infrastructures operational control centre and administrative building, maintenance and workshop buildings. Including architectural finishing works and design and build of pre-engineered building structures of car depot at Mogharpada for Metro Line-4 and 4A of Mumbai Metro Rail Project of MMRDA	US\$ 113 Mn INR 905.77 Cr



# TAKING THE PATH OF INNOVATION & PERFECTION

We, at Vishwa Samudra, have earned a strong reputation for focused and timely executions with significant value-addition at every step. From implementing environment-friendly technologies to maintaining world-class construction practices and protocols, we have always charted new paths of execution excellence. We have a varied portfolio of ground-breaking projects across the landscape of infrastructural constructions.

S.No.		Project Cost	Project Length (in Km)	Duration
<b>AIB Projects in Andhra Pradesh (1 to 9):</b>				
1	PackageNo.18/APRRP/PRED/KRSN/Road/001 Construction of 39 roads in Krishna District	US\$ 10 Mn (INR 80.28 Cr)	84.42	2 Years
2	PackageNo.19/APRRP/PRED/KRSN/Road/002, Construction of 19 roads in Krishna District	US\$ 3.22 Mn (INR 25.79 Cr)	42.05	15 Years
3	PackageNo.37/APRRP/PRED/KDP/Road/001 Construction of 99 roads in Kadapa District	US\$ 812 Mn (INR 64.98 Cr)	109.65	2 Years
4	Package No. 42/ APRRP /PRED /KRNLI/Road /003, Construction of 31 roads in Kurnool District	US\$ 755 Mn (INR 60.46 Cr)	89.13	2 Years
5	PackageNo.43/APRRP/PRED/KRNLI/Road/003, Construction of 27 roads in Kurnool District	US\$ 6.6/8 Mn (INR 53.44 Cr)	72.14	2 Years
6	PackageNo.25/APRRP/PRED/PKM/Road/004 Consists of 63 road works in Prakasam District	US\$ 9.77 Mn (INR 78.23 Cr)	115.07	2 Years
7	PackageNo.46/APRRP/PRED/ATP/Road/002 Consists of 62 road works in in Ananthapuram District	US\$ 7.81 Mn (INR 62.54 Cr)	127.82	2 Years
8	PackageNo.03/APRRP/PRED/SKLM/Road/003 Consists of 94 road works in Srikakulam District	US\$ 10.19 Mn (INR 81.54 Cr)	127.62	2 Years
9	PackageNo.04/APRRP/PRED/SKLM/Road/004 Consists of 87 road works in Srikakulam District	US\$ 7.99 Mn (INR 63.96 Cr)	128.243	2 Years
10	Six Laning of Thaliparamba- Muzhappilangad Section from km 137.900 to km 170.600 of NH-17 (New NH-86) (Project Length 29.948 km) in the State of Kerala	US\$ 254.75 Mn (INR 2038 Cr)	29.948	2.5 Years
11	Six Laning of Kattunkulangara (Design Km.454500) to start of Kollam Bypass (Design Km.486.000) section of new NH-66 (Old NH-47) in the State of Kerala on HAM Model Under Bharatmala Pariyojana ( N/04002/18002/KL)	US\$ 197.5 Mn (INR 1508 Cr)	31.5	2.5 Years
12	Upgradation of roads under (Full depth redamation(FDR) ) Pradhan Mantri Gram Sadak Yojna Package No. 33 to 4), Uttar Pradesh (UPRRDA)	US\$ 281 Mn (INR 233.27 Cr)	257.2	1 Years
13	Modernisation of the Kakinada Anchorage Port: Construction of wharves & loading points, strengthening of existing roads, special repairs to existing groynes and revetments: Andhra Pradesh	US\$ 916 Mn (INR 7334 Cr)		1 Years
14	Construction of the CISF Residential Quarters Building at the Mopa Airport, Goa (Ardee Eng. Pvt. Ltd.)	US\$ 5.6 Mn (INR 45 Cr)	12 Lakh Sqft.	5 Months
15	Seigniorage collection: Issuing permits to miners and to collect Seigniorage fee for cargoes such as granite, aggregate, gravel etc. in Srikakulam, Andhra Pradesh	US\$ 37 Mn (INR 300 Cr)		2 Years
16	Construction of four/six lane access controlled expressway from junction with Hirangar road near village Gurha Balkiran to Junction with Jammu Ring road (NH-244A) near doah village; (km 488+100 to km 503+250) of Delhi Amritsar Katra Expressway on HAM under Bharat-mala Pariyojana in the UT of J&K [Phase - II Package XV]	US\$ 233.5 Mn (INR 1870 Cr)	35.15	2.5 Years
17	Construction of Greenfield Port at Bhavanapadu on EPC basis, Srikakulam, Andhra Pradesh	US\$ 388.7 Mn (INR 2949.7 Cr)		3 Years
18	Six Laning of Paravoor ( Design chainage 417.000)to Kattunkulangara (454500) section of new NH-66 (old NH- 47) in the State of Kerala under Bharatmala Pariyojana (SEW)	US\$ 144 Mn (INR 1152 Cr)	37.5	



# VISHWA SAMUDRA ENGINEERING

## A PIONEER OF SORTS IN TIME AND QUALITY

Vishwa Samudra Engineering was formed with the objective to become a world class Engineering, Infrastructure and Construction Company in providing state-of-the-art engineering and construction services.

Vishwa Samudra's work over the years has been transformative with futuristic thinking and commitment towards a sustainable environment. The company offers an integrated suite of multi-disciplinary infrastructure services that address complex challenges and deliver turn-key projects that reflect our domain knowledge and unwavering focus.

The company has evolved as one of the fastest growing companies in the country with projects across a wide spectrum of verticals, powered by a strong and committed team of professionals.





# CORE COMPETENCIES BUILT ON THE FOUNDATION OF INNOVATION

## ROADS

Offering a wide spectrum of road development services, our highly competent engineers, and skilled workers deliver outstanding technical know-how and expertise to develop innovative, optimal, and environmentally viable solutions, within the budget and on time. Beginning with robust planning and selection of first-grade construction materials, every step is executed with precision to deliver the highest quality.

- *National and State Highways (Kerala, Jammu & Kashmir, Manipur, Andaman & Nicobar, Punjab, UP, Bihar)*
- *City and Rural Roads (AP, Telangana, Kerala)*
- *Airports (GMR Airport – Hyderabad, Mopa Airport – Goa)*
- *Seaports (Krishnapatnam Port – Nellore, Katupalli Port – Chennai)*



# PORTS & MARINE STRUCTURES

We have built substantial competencies in developing infrastructure for the seaports and marine industry. Understanding the key aspects of environmental sensitivity and seaport operations, we have executed projects with expertise and finesse.

- **Berth construction works**
- **Piling works**
- **Construction of diaphragm wall, deck slab, deck fittings, Krishnapatnam Truck Terminal, Berth Roads, etc.**



## CIVIL WORKS

Our expertise in the sphere of civil construction and urban edifices is underlined by our thrust on new-age techniques, advanced methodologies, along with premium grade construction materials.

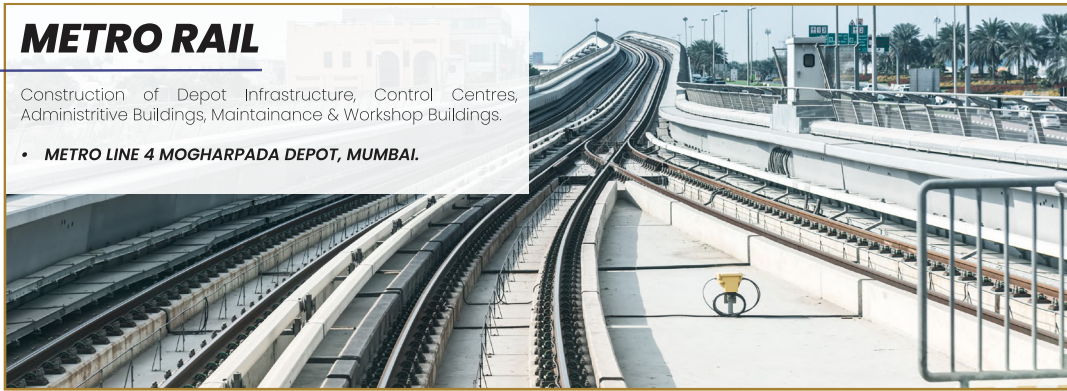
- **Schools, Libraries, Labs**
- **Food Processing Units, Cold Storage**
- **Accommodation Facilities**
- **Agriculture Godowns**
- **Krishnapatnam Agri-Godown, Navayuga World School and more.**



## METRO RAIL

Construction of Depot Infrastructure, Control Centres, Administrative Buildings, Maintenance & Workshop Buildings.

- **METRO LINE 4 MOGHARPADA DEPOT, MUMBAI.**



# AIRPORT RUNWAYS

Over the years, we have been developing solutions in satisfying the needs of large international airports by offering an entire gamut of services to preserve, protect, maintain, and restore runways, especially in the air-side environment.

- **Planning and laying out airport's landing fields.**
- **Construction work of leveling fields, surfacing runways and drainage systems.**
- **Construction of new and renewal of existing runways and taxiways has been executed using the Soil Stabilization Technology.**

Main and Secondary Runways, Taxiways at GMR Airport, Hyderabad and the upcoming Landside Roads at the Mopa Airport, Goa.



## MECHANICAL

- **Fabrication and laying of Edible Oil Pipeline along with junction valves.**
- **EPC of Material Handling Systems like Conveyors, Stacker cum Re-claimers, and Rapid Wagon.**
- **Loading Systems and other general fabrication and Foundry works.**

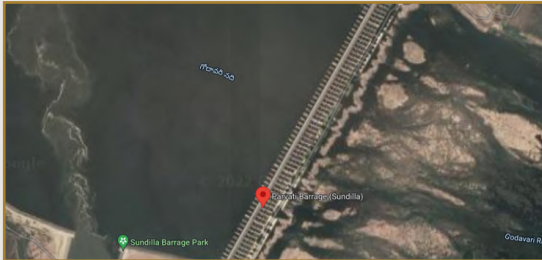
## ROPEWAYS

Construction of Urban Ropeways to solve the problems of congestion in Transportation across cities and crowded spaces, making cities smarter with techno-infrastructure elements. India's first urban ropeway project in varanasi is being constructed by us.

## ELECTRICAL

Consisting of Switchyards, Substations, Power Distribution Solutions, Integrated Building Management Systems and more.





## **IRRIGATION**

Our expertise in the sphere of civil construction and urban edifices is underlined by our thrust on new-age techniques, advanced methodologies, along with premium grade construction materials.

## **LOGISTICS**

We also provide end-to-end logistics solutions for construction projects including Warehousing and Cargo Handling • Schools, Libraries, Labs.

## **MANUFACTURING**

We are engaged in the manufacturing of indigenous Cement Spreader unit, which was earlier imported from Germany and assembled in India.

## **R&D**

We have a strong team of Research and Development experts who are constantly working on futuristic problem-solving technological methods to lift the bar of innovation higher across all areas.

## OUR EMPLOYEE STRENGTH

Total Staff: **3500** across India  
Includes over 300 technically qualified personnel across Civil Engineering, Mechanical Engineering and Electrical Engineering  
3 PhDs and over 100 Master's graduates

## OUR TECHNOLOGICAL EDGE

A progressive company technologically, VSE has adopted innovative approaches to reduce cost, accelerate speed of work and bring in transparency and efficiency to processes across all verticals.

- MIS for Operations
- RFID for Equipment Monitoring
- Sensor Monitoring on Equipments
- Drone Survey Systems
- BIM
- GPS for Equipment Tracking
- Latest IOT Technologies

## Key Clientele



भारत सरकार  
भारत



National Highways Authority  
of India



MINISTRY OF ROAD  
TRANSPORT  
AND HIGHWAYS



MAFDEL  
MAFDEL

adani



एम एम आर डी ए  
MMRDA



KRISHNAPATNAM  
PORT



OPCO  
OPERATOR PVT. LTD.



MEGAWIDE



FANCISSAT R&B CENTRAL  
DEVELOPMENT, GOAP



meil  
Mech Engineering & Instrumentation Ltd



GAR



Public Works Department  
(Buildings and Roads) Punjab



## EQUIPPED WITH THE CUTTING-EDGE OF CONSTRUCTION

One of Vishwa Samudra's core strengths is its cutting-edge infrastructure and robust fleet to accomplish projects of any size and scale. Through superior technology, rapid allotment of equipment and deployment of qualified personnel, we ensure all the needs of the project are met comprehensively and within time. We have invested in procuring some of the most advanced and preferred fleets in the industry, which include:

- *Piling Rigs*
- *Barges*
- *Launching Girder*
- *Diesel Bowser Truck*
- *Paver Finisher*
- *Hot Mix Plant, Batching Plant*
- *Motor Graders*
- *Soil Compactors*
- *Cold Recycler/Soil Stabiliser*
- *Tractor Additive Spreader*
- *Mobile Crusher*
- *Dredger*
- *Excavators, and more*



# A NEW RECORD IN ROAD CONSTRUCTION WITH STABILROAD



STABILROAD

The VSE team scaled new heights by breaking its own record on October 22, 2022 in Sitapur, Uttar Pradesh

**9351 sqm / 2.5 Lane Kms in less than 24 Hours!**

Project: Upgradation of Roads under Full Depth Recycling (FDR) – Pradhan Mantri Gram Sadak Yojna Package No. 33 to 41, Uttar Pradesh (India) under UPRRDA.

**Total Length: 257.2 Km**



**New  
Record**

# INNOVATIVE / HIGH QUALITY / ECONOMICAL

## VISHWA SAMUDRA ENGINEERING HAS THE EXCLUSIVE RIGHTS TO USE STABILROAD IN INDIA, GUYANA, TANZANIA AND SURINAME

StabilRoad® today is one of the most advanced and innovative soil stabilization materials and technologies in the world. StabilRoad® is a whitish powder made of 100% natural minerals with no synthetic chemicals. The high quality, superior warranty and successful track record of this German Technology over the last 20 years across all continents in different climate zones and numerous soils of different types, shows the vast experience and expertise in constructing roads of the best quality.



*This stabilizing process entails the mixing together of existing soil (including old asphalt), the StabilRoad® additive and cement (Portland cement needed, clinker content > 95%).*

- **ACCELERATES** the construction process
- **REDUCES** the cost of work
- **ENHANCES** cement hydration
- Makes the soil **HIGHLY RESISTANT** to absorption of water
- **Creates a very STRONG, ELASTIC, WATERPROOF and FROST- PROOF** surface
- **NO NEED TO EXCAVATE** the old or existing soil
- **NO NEED TO DISPOSE** the old soil/pavement
- The constructed roads can be **PUT-TO-USE WITHIN HOURS** after construction
- The constructed surface **PREVENTS RUTTING and CRACKING**
- **EXPENSES** related to excavation, transportation and utilization of soil are **EXCLUDED OR MINIMIZED**
- There is **little or NO SIGNIFICANT NEED FOR THE PURCHASE AND TRANSPORT OF INERT AGGREGATES**
- **HIGHLY EFFICIENT** in extreme climatic zones (rains, heat and cold)



## Traditional Road Construction

For a 1 Lane Km Road

**StabilRoad®**

112 rides



Transport

7 rides

2560 tons



New Soil

160 tons

1300 tons



Soil transportation

9 tons

7000 liters



Fuel consumption

1000 liters

21 days



Duration

3 days

3225 CO<sub>2</sub>/km



CO<sub>2</sub> Pollution

645 CO<sub>2</sub>/km

Mechanized column



Labor force amount

Mechanized brigade

*A total of approx. 930 Lane-Km has been executed so far in the States of Andhra Pradesh, Telangana, Kerala, Andaman & Nicobar Islands, Uttar Pradesh, Manipur, Jammu & Kashmir, Arunachal Bihar & Punjab using the Soil Stabilization/Full Depth Recycling Technology.*

**Natural Aggregate Saved: 26,00,000 Cum (40,30,000 Tons)**

# ECOLOGICAL ADVANTAGES

StabilRoad® technology gives a very high ecological advantage over traditional road construction.

- Minimum energy/fossil fuel consumption
- Recycling and re-use of local soils and materials
- Reduction in emitting harmful exhaust gases to the surrounding environment
- Decrease in negative public response resulting from the high-volume transport of huge inert materials
- Reduction in the use of non-renewable natural resources
- No contamination from the soil is released into the environment

A total of approx. 400 Lane-Km has been executed so far in the States of Andhra Pradesh, Telangana, Kerala, Andaman & Nicobar Islands, Uttar Pradesh, Bihar & Punjab using the Soil Stabilization/ Full Depth Recycling Technology.



**TOTAL CO2 REDUCTIONS: OVER 33,000 TONNES**

## SEGMENT WISE AVERAGE UCS STRENGTH RESULTS

<b>SEGMENT</b>	<b>UCS STRENGTH (MPa)</b>		<b>MODULI VALUES (MPa)</b>		<b>AVG TOTAL SAVINGS</b>
	<b>MINIMUM</b>	<b>ACHIEVED</b>	<b>MINIMUM</b>	<b>ACHIEVED</b>	<b>NATURAL RESOURCES (%)</b>
<i>INFRASTRUCTURE</i>	4.5	8.92	900	7422	91%
<i>AIRPORTS</i>	4.5	8.28	900	10444	75%
<i>CITY ROADS NATIONAL</i>	4.5	9.22	900	7987	64%
<i>HIGHWAYS STATE</i>	4.5	7.22	900	8200	84%
<i>HIGHWAYS RURAL</i>	4.5	5.88	900	9164	85%
<i>ROADS</i>	3	5.66	600	6806	80%

# PROJECT EXECUTED BY VSE USING STABILROAD®

## **INFRASTRUCTURE:**

1. KRISHNAPATNAM PORT, NELLORE (10 Lane-Km)
2. KATUPALLI PORT, CHENNAI (2.6 Lane-Km)

## **RURAL ROADS:**

1. SALIPETA – PORANKI ROAD, VIJAYAWADA, ANDHRA PRADESH (4.4 Lane-Km)
2. AIB – PACKAGE 18 & 19 IN KRISHNA & PACKAGE 42 & 43 IN KURNOOL, ANDHRA PRADESH (100 Lane-Km)
3. LALRU – MALAN ROAD, PUNJAB (20 Lane-Km)

## **STATE HIGHWAYS:**

1. PURVANCHAL EXPRESSWAY – SERVICE ROADS, UTTAR PRADESH (10 Lane-Km)
2. ANAYADI – KOODAL ROAD, KERALA (10 Lane-Km)
3. UTTAR PRADESH – 33 Roads ( Length 257.62 KM)

## **AIRPORTS:**

1. GMR INTERNATIONAL AIRPORT, MAIN RUNWAY & TAXIWAYS, HYDERABAD (7 LAKH SQM.)
2. MOPA international Airport, Goa Landslide Roads (24 Lane-Km)

## **NATIONAL HIGHWAYS:**

1. NH4 – ANDAMAN AND NICOBAR ISLANDS (90 Lane-Km)
2. NH104/77 – BIHAR (40 Lane-Km)

## **CITY ROADS:**

1. NTR MARG, HYDERABAD (3.6 Lane-Km)
2. ECIL – AS RAO NAGAR ROAD, HYDERABAD (3 Lane-Km)

## APPROVALS & VALIDATIONS

- Accreditation by Indian Roads Congress, New Delhi
- Central Road Research Institute, New Delhi – Approval – Highly positive conclusions on UCS value, durability, residual strength elastic moduli and riding quality
- IIT-Chennai – Approval – Concluding no impact of leached substances or contamination in the soil and water
- IIT-Roorkee – Monitoring and ongoing research – Stating high strength, durability, elasticity, cement hydration and no new aggregates needed
- IITR.Lucknow – Approval – for toxic free content in StabilRoad
- Research at IIT – Hyderabad and NIT – Warangal
- VSE's inhouse testing and support by TEEDE TEHNOESKUS, Estonia

# COMPLETED PROJECTS

## ***NHIDCL – NH4, Andaman Islands***

**Location:** Andaman & Nicobar Islands NHIDCL  
**Road Length:** 90 Land Kms  
**Technology:** Stabilization

## ***Development of Truck Terminal, Berth Road***

**Location:** AP Krishnapatnam Port Company Limited (KPCL) Road  
**Length:** 5 Kms  
**Technology:** Stabilization



## ***Rehabilitation and upgrading to Two Lanes /Two lane with Paved Shoulder of Sitamahri-Jayanagar-Narahia Road***

**Location:** NH104/77 NH 104/77, Bihar  
**Road Length:** 40 Lane Kms  
**Technology:** Stabilization



## ***Rehabilitation of MV Road to Poranki H/W via SalipetaGanguru(V) of Penamaluru Mandal***

**Location:** Vijayawada, Andhra Pradesh, Megha Engineering & Infra structure Limited (MEIL) – PR&RD Government of AP  
**Road Length:** 2.265 Kms  
**Technology:** Stabilization



### ***Development of Purvanchal Expressway***

**Location:** Uttar Pradesh APCO – UPEIDA

**Road Length:** 10 Lane Kms **Technology:** Stabilization



### ***Construction of Internal Roads at Andhra Sugars***

**Location:** Andhra Sugars Plant,

**Andhra Pradesh Road Length:** 4950 sqm

**Technology:** Stabilization



### ***Construction of Approach Road***

**Location:** Kothapatnam (V), Kota (M), SPSR Nellore District, Andhra Pradesh, Nekkanti Mega Food Park Private Limited

**Technology:** Stabilization

### ***Internal Roads***

**Location:** Katupalli Port, TamilNadu

**Road Length:** 2.6 Lane Kms **Technology:** Stabilization

### ***Development of Internal Landslide Roads at MOPA International Airport, Goa***

**Location:** Katupalli port, Tamilnadu

**Road Length:** 24 Lande Kms **Technology:** Stabilization



### ***Quazigund to Banihal Highway Tunnel:***

One of the most critical projects for India to ensure all-weather connectivity to North Kashmir through the Pir-Panjal Pass. This tunnel shortens the distance between Srinagar and Jammu considerably. Twin tunnels of 8.45 Km each and 10m in diameter. High strategic importance to military services in the region.



### ***Naval Academy Ezhimala, Kerala:***

Situated on the West Coast of India (Ettikulam Bay & 7 Kms Beach), where a world-class academy with state-of-the-art architecture & construction. The sports complex and sailors accommodation was constructed in record time consisting of an Indoor Olympic Size Swimming Pool & Diving Pool, Indoor PT Shed and Drill Shed, elevated Parade Ground with 13 M high Retaining Walls.

### **Construction of Road using Stabilization Technology**

**Location:** Indira Gandhi Statue to Telugu Talli Statue (NTR Marg) Hyderabad, Telangana Road

**Length:** 3.6 Lane Kms

**Technology:** Stabilization



### **Construction of Road using Stabilization Technology**

**Location:** Kapra Circle, ECIL, Hyderabad, Telangana Road

**Length:** 3 Lane Kms

**Technology:** Stabilization



### **Improvements to Anayadi - Pazhakulam - Kurampala - Keerukuzhi - Chandanappally - Koodal Road by adopting Full Depth Reclamation (FDR) Technology**

**Location:** Kerala, Kerala Road Fund Board (KRFB)

**Road Length:** 10 Lane Kms

**Technology:** Stabilization

### **Strengthening of Lalru - Handesra Khelan Mallan Road by way of Cold in Situ**

**Location:** Punjab PWD B&R Branch, Punjab Road

**Length:** 20 Lane Kms **Technology:** Stabilization





### ***Sundilla Barrage Left Bank Works, Peddapalli***

**Location:** Telangana Navayuga Engineering Company Limited

**Technology:** Irrigation works

### ***Execution of Palamuru Ranga Reddy Lift Irrigation Scheme Package- 10 in***

**Location:** Telangana- Formation of Venkatadri Reservoir bund from km 6.99 to Kms 11.55 at Vattem Billinepally (M), Nagar Karnool District (Mahabubnagar Dist), Mahaboob Nagar, Telangana Navayuga Engineering Company Limited

**Project Type:** Irrigation works, Building Works



### ***Execution of Palamuru Ranga Reddy Lift Irrigation Scheme Package-1***

**Location:** Mahaboob Nagar, Telangana Navayuga Engineering Company Limited

**Project Type:** Irrigation works

### ***Construction of Navayuga World School***

**Location:** Krishnapatnam Port, Nellore, Andhra Pradesh CVR Foundation

**Project Type:** Building works







## A PROGRESSIVE JOURNEY FILLED WITH MILESTONES

With a strong focus on innovation and delivering quality, Vishwa Samudra has consistently delivered many milestone projects by overcoming complex engineering scenarios and location-based challenges. Some of our significant achievements include:



### ***Kaleshwaram Lift Irrigation Project:***

For lifting of 146.24 TMC of water with a total discharge capacity of 634 cumecs. Vertical lifting up to 110m, one of the highest lifts in Asia. Consists of twin tunnels, each 9.534 Kms long, 10m diameter, to elevate water into the surge pool. A display of engineering ingenuity by 100m underground construction.



### ***Dhola - Sadia bridge:***

The longest River Bridge on the Brahmaputra in Assam. Being 9.5 Kms long, this bridge is of strategic importance to India.

### ***Dibang - Lohit River Management System:***

Spread across a total length of 17.4 Kms, managing 11 tributaries and their diverse paths. One of the most challenging river management projects, done in sync with the construction, boat traffic and diverse flow paths of the rivers.

### ***Dredging of Krishnapatnam Port:***

Berthing area, Turning Circle and Navigational Channel- Massive dredging done in Various locations, upto 36,00,000 CBM.

# SHAPING THE FUTURE WITH BREAKTHROUGH MINDSET

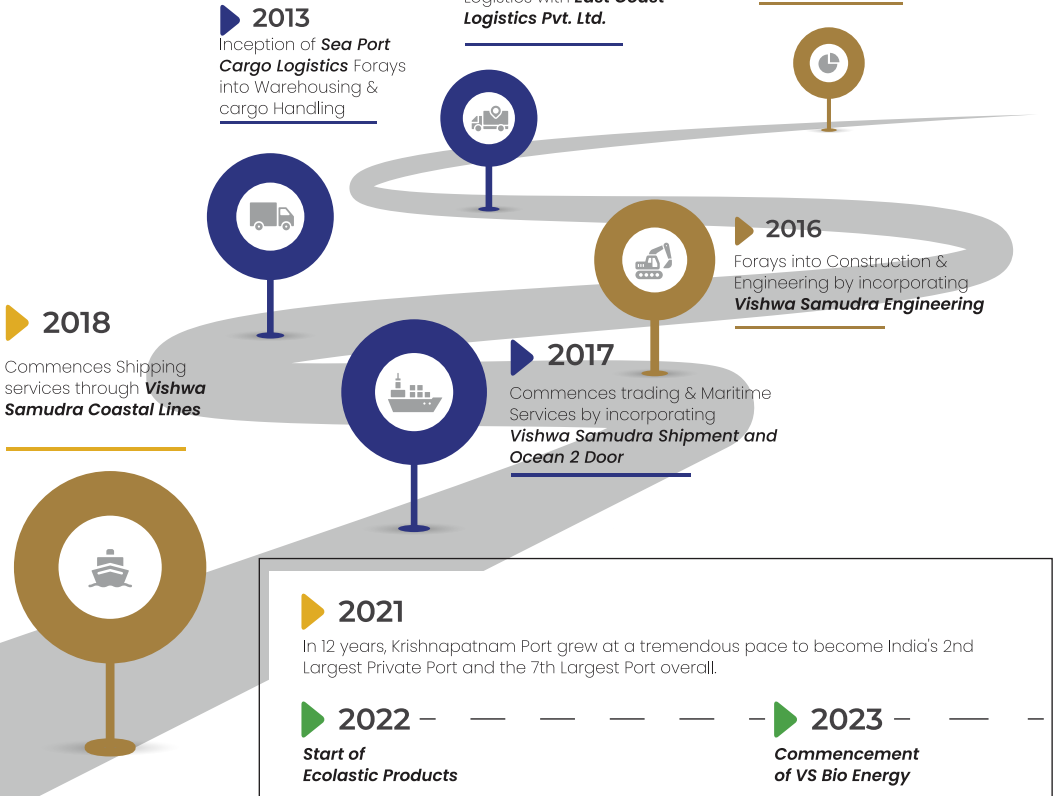


With the world progressing at a break-neck pace, the need to strike a fine balance between advancement and sustainability is more vital than ever. We, at Vishwa Samudra Engineering, focus on providing the infrastructural impetus with increased responsibility and commitment.

We will continue to make a differential impact in the fields of engineering and construction, by engaging excellence at every step, investing in innovation, and providing people the right platform to reach their highest potential. With time, we aim to achieve, and improve upon, the highest standards of perfection, and tap emerging infrastructure opportunities both in India and abroad. In the process, maintain the balance and pave the way for a better world.

# THE VISHWA SAMUDRA GROUP COMMITMENT

Unwavering commitment to conduct business ethically beyond borders has highlighted the ambitious vision of this dynamic Group. The experience and credibility of the seasoned Vishwa Samudra team over the last decade has reflected their stellar work that has been transformative with futuristic thinking and commitment towards a sustainable environment. The multi-disciplinary services offered reflect our rich domain knowledge and agility



# OUR BUSINESSES

## Infrastructure & Engineering

Highways, City Roads, Rural Roads, Airport Runways, Port Roads, Dams, Ropeways Bridges, Metro



## Shipping Services

Bulk, Container, Coastal, Bunkering, Chartering



## Construction

Ports, Tunnels, Schools, Container Terminals, Warehouses, Irrigation, Marine Structures



## Maritime Services

Freight Forwarding, Cargo Handling & Storage, Custom clearance & value addition

## Real Estate

Residential, Commercial, Township Development



## Manufacturing

Compostable Granules, Bags, Sacks/Bags



## Security Services

Training, Skill Development & Deployment



## Logistics

Bulk, Container, Liquid Transportation

## Commodity Trading

Coal, Iron



A forward-thinking company committed to a sustainable environment. VSE is a multi-disciplined civil construction company delivering turn-key projects across a diverse sector. Extraordinary quality and selection of first-grade construction materials are a set priority throughout the project execution. VSE's portfolio of construction works ranges from road constructions (National and State Highways, Urban and Rural roads), Marine structures, Ports, Irrigation projects and Airport runways.



VSBEPL is subsidiary of Vishwa Samudra Holdings Private Limited, which is a multilateral business conglomerate headquartered in Hyderabad, India. A rapidly growing group with a strong presence in India, with over 25 companies that started its roots at the Krishnapatnam Port in India, also business interests in various countries like Singapore, UAE, France, Guyana, Maldives, Germany, etc., panning across various verticals-Infrastructure & Engineering, Construction, Logistic, Shipping Services, Manufacturing, Commodity Trading, Security Services, Port Operations, and Real Estate.

## SOME OF OUR COMPANIES



A fully diversified shipping services company offering solutions in the maritime industry such as - fleet management, dedicated transportation, customs house agents, cargo handling integrating vertically into the supply chain management.



A door to door cargo logistics company with exceptional expertise in end to end delivery management of Imports and Exports. It offers a range of intermodal services including road, rail and waterways, to move cargo equipped with fully integrated systems. It also handles the Marine Sales for the combustion catalyst FuelSpec globally.

## **CHINTA SASIDHAR FOUNDATION: NANDHA GOKULAM**

The Chinta Sasidhar Foundation is set up with the intent to give back to society and create an ecosystem where humans and animals peacefully co-exist with the nature. The Foundation is engaged in setting up progressive schools, Bull shelters, wellness centers, senior living spaces besides other meaningful ventures under its umbrella.

**BULL SHELTER | ADOPT | SCHOOL | WELLNESS CENTRE | SENIOR LIVING SPACES**



### **Nandha Gokulam Life School (NGLS)**

The visionary Mr. Chinta Sasidhar has pledged to create an impact in education. The Foundation is committed to providing free education to students from the marginalized sections of society as well as setting up schools offering progressive international curriculum. NGLS is a residential school with state-of-the-art infrastructure and facilities, spread over 25 acres of campus. The school is set up to provide meaningful education to students from the marginalized sections of the society.



The primary objective of the foundation here is to **BUILD AN ECONOMY FOR BULLS IN INDIA**, to support farmers financially and to **REINSTATE THE LOST IMAGE OF THE HOLY BULL** by giving an opportunity to every male calf to live.

- 200-acre facility in Nellore, Andra Pradesh, India
- Phase 1 investment on Construction US\$ 12.5m (INR 100 Cr)
- Estimated Completion Time: May 2024
- Capacity to hold 3000 cattle
- Engaging Events & Activities to show the Bull's physical prowess
- Cruelty-free, no-contact activities
- Bull Training area with Gallery
- Residential school for 500 boys from the marginalized sections of society
- International standards sports infrastructure
- School focusses on nurturing students to be sensitive towards animals and nature
- 5 Star cottages by the lake for Senior Citizens living
- Innovations in product development with the Urine, Dung and Energy of Bulls
- A Wellness Centre with medicines derived from Cattle and Ayurveda
- 1800 varieties of medicinal herbs and trees; over 140 ayurvedic medicines made indigenously
- Digital Adoption of Bulls, Merchandise, Shop, App, Crypto, NFTs Animation & Games



# VISHWA SAMUDRA ENGINEERING PVT. LTD.



## **CORPORATE OFFICE**

8th & 9th Floors, Vamsiram Jyothi Valencia, Road No. 2,  
Banjara Hills, Hyderabad – 500034  
+91 40 6799 6799

## **MUMBAI OFFICE 1**

Gate 4, 603, 6th floor, Universal Majestic, Govandi  
west, Mumbai 400043

## **MUMBAI OFFICE 3**

3rd Floor, Raheja Chambers, Main Avenue Crossing,  
Above Benetton Showroom,  
Linking Road, Santa Cruz West, Mumbai – 400054

## **DELHI OFFICE 1**

Vishwa Samudra Engineering  
56, Jor Bagh, New Delhi – 110003



Scan to visit Website

## **MUMBAI OFFICE 2**

4F- A1, Gurukruppa  
Aba Karmarkar Road, Yashodham, Goregaon, Mumbai  
Maharashtra 400063  
+91 91549 87230

## **GUYANA OFFICE**

Lot 99, Hadfield Street, Werk En Rust,  
Gerogetown, Guyana

## **DELHI OFFICE 2**

Unit No. 507, 5th Floor, Asset Area No.7,  
Hospitality District, Worldmark 3, Delhi Aerocity,  
New Delhi – 110037

## **DUBAI OFFICE**

IFZA Business Park, DDP,  
Dubai Silicon Oasis, Dubai, UAE

vishwasamudra.in | www.vishwasamudragroup.com

**AN ISO 9001:14000 & 45000 CERTIFIED COMPANY**



# VSE

